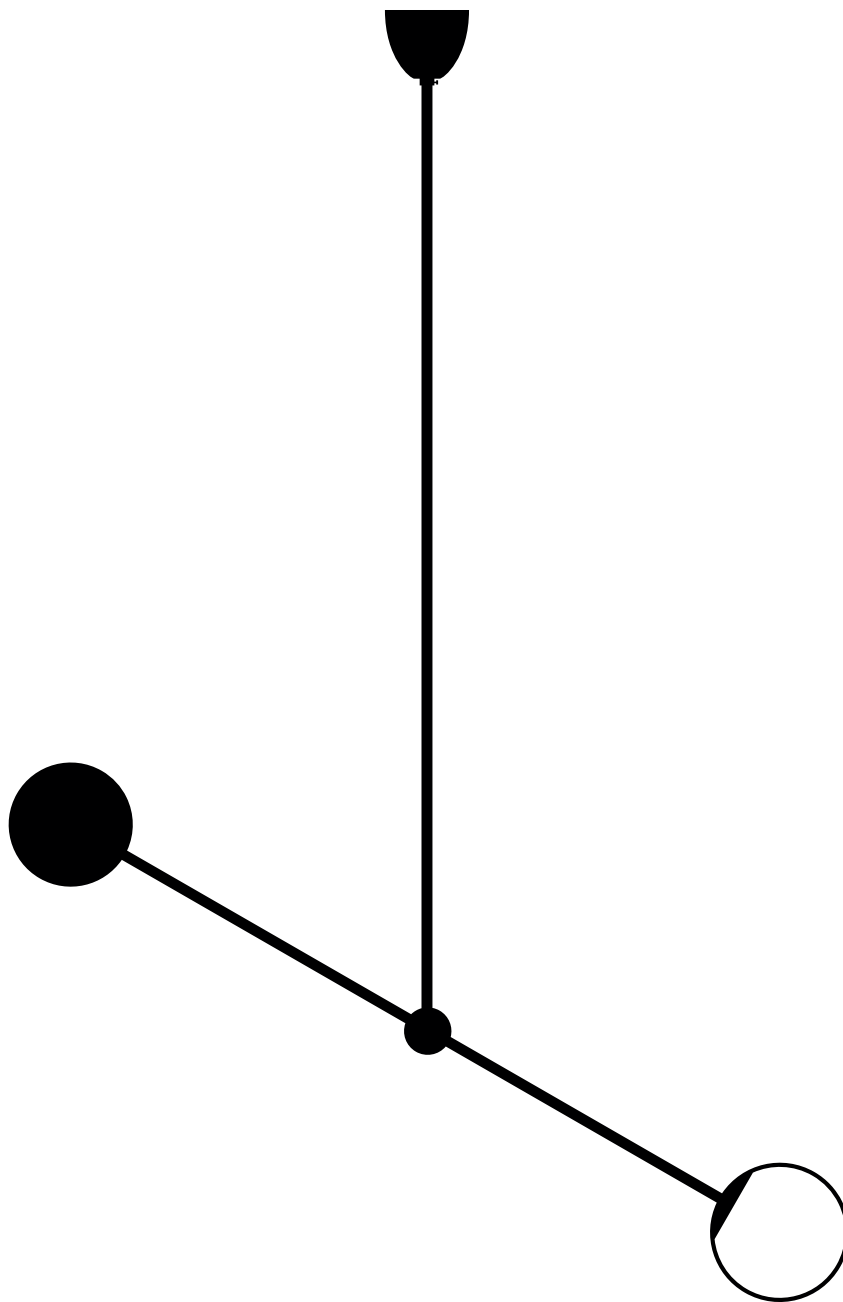


Product  
sheet







## Delivery delays

6 to 8 weeks

## Materials

Smooth brass, mouth blown glass

## Available finishes

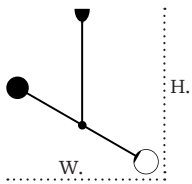
 Brass	Polished lacquered Polished unlacquered	Brushed
 Nickel	Polished lacquered	Brushed
 Brass + black tubes		
 Nickel + black tubes		

## Available color

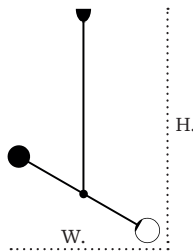
For the central tube

 Black	 Red wine	 Papyrus
 Mustard yellow	 Green pine	

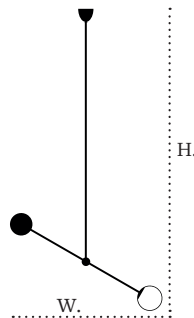
## Dimensions



H. 1200 mm  
W. 1100 mm  
6 kg



H. 1700 mm  
W. 1100 mm  
6,5 kg



H. 2200 mm  
W. 1100 mm  
7 kg

## Diameter of spheres

glass 180 mm

brass 160 mm

## Light sources

1 x Led G9 / 5W, 220V

**Class 1**

## Certifications

EC declaration of conformity

## Notes

- Bulb is not provided
- Additional charges for any changes or special orders
- As our lamps are handcrafted, the dimensions and finishes may vary slightly from one model to another

## Fixing options

Regular thread guard



H. 90 mm  
Ø. 110 mm

Plate



H. 4 mm  
Ø. 150 mm

Reclining plate



H. 4 mm  
Ø. 150 mm