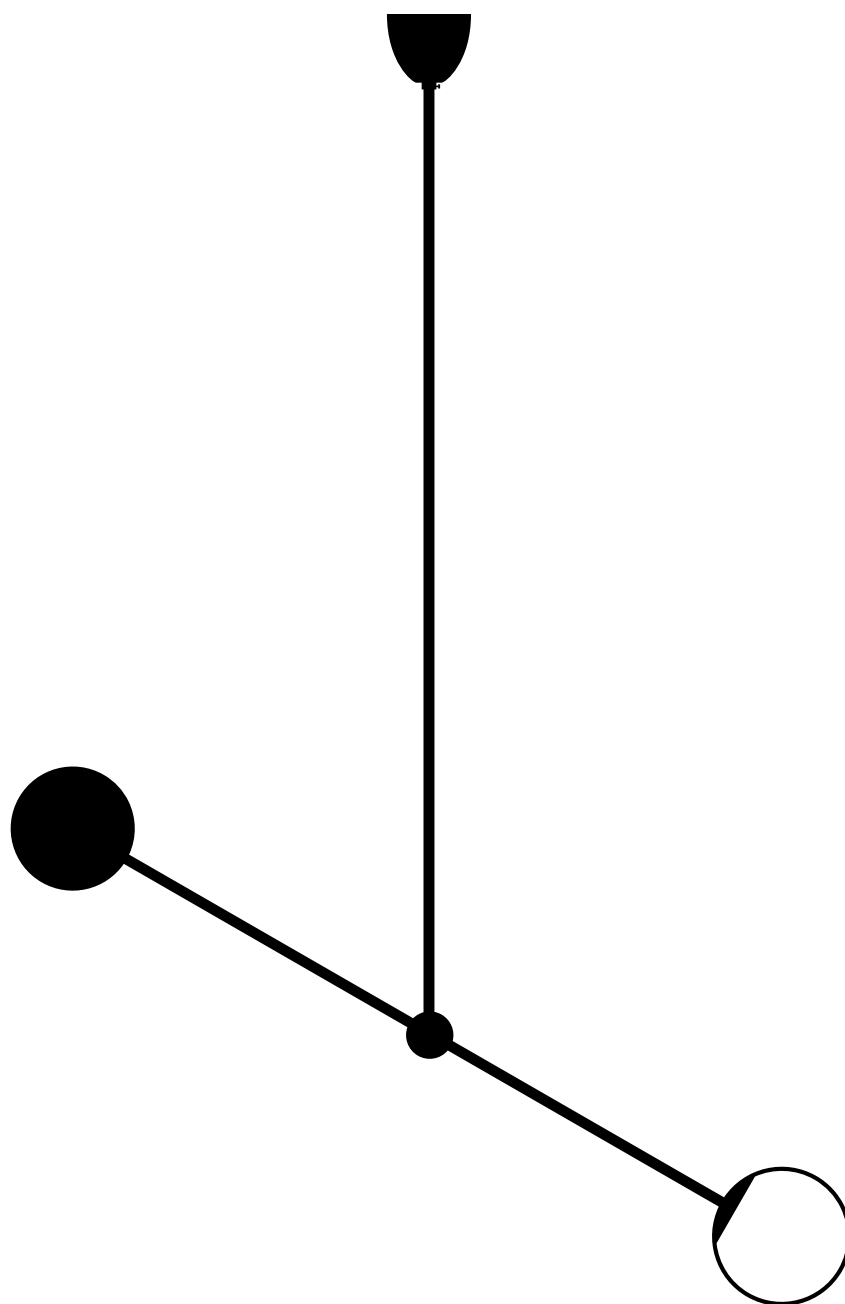


Installation
instructions



Instructions

- Must be installed by a professional
- Handle items carefully
- Use appropriate screws and equipment
- Wear gloves during installation

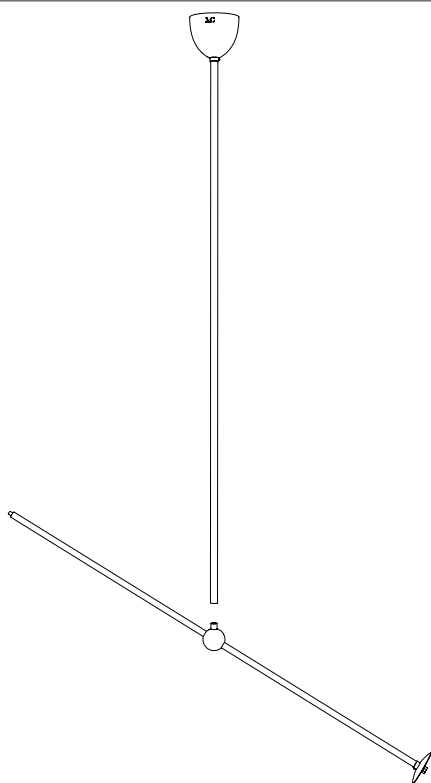
Assembly time

1h30

Number of people required

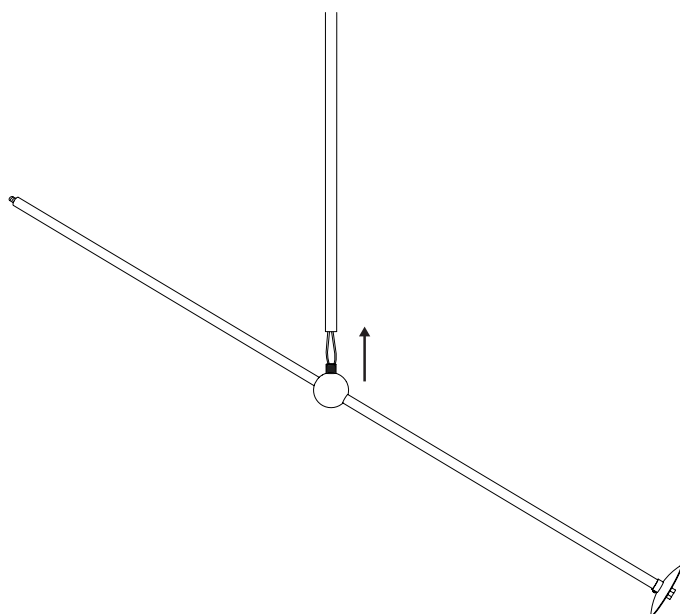
2

1



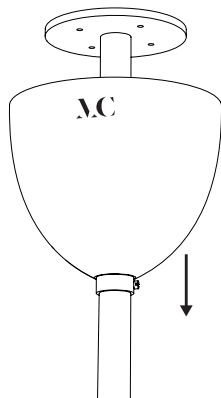
Put off the elements from the transport box.

2



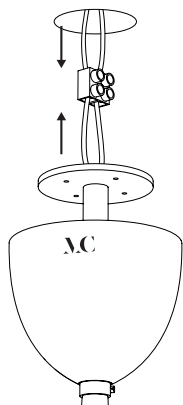
Connect the elements.

1



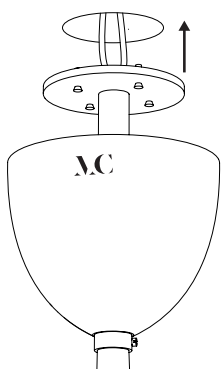
Lower the thread cover on the tube.

5



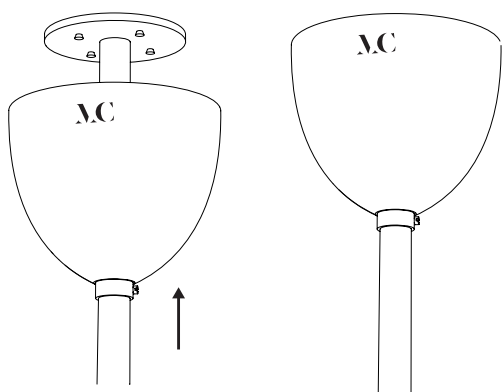
Connect the wires to the mains.

6



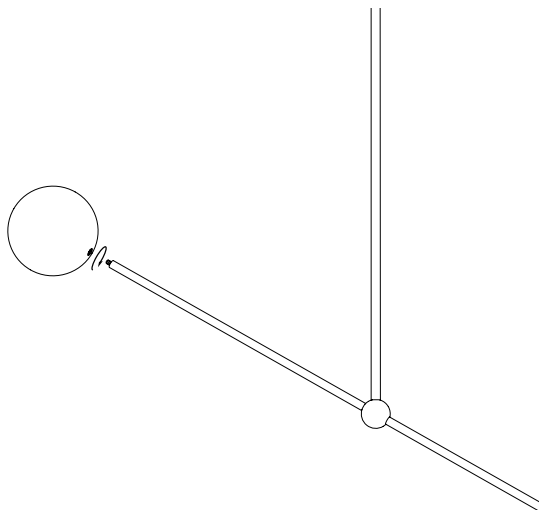
Fix the plate to the ceiling with dowels.

7



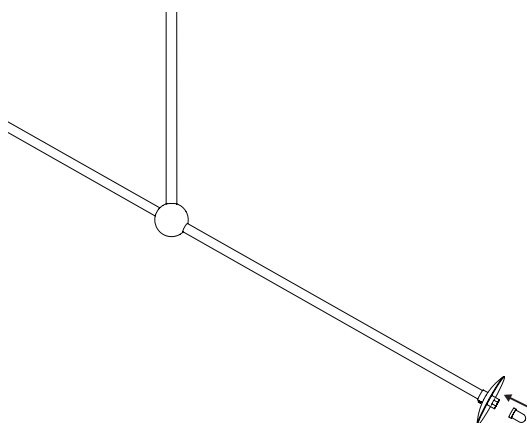
Pull up the thread guard by unscrewing the ring's screw and screw it back.

1



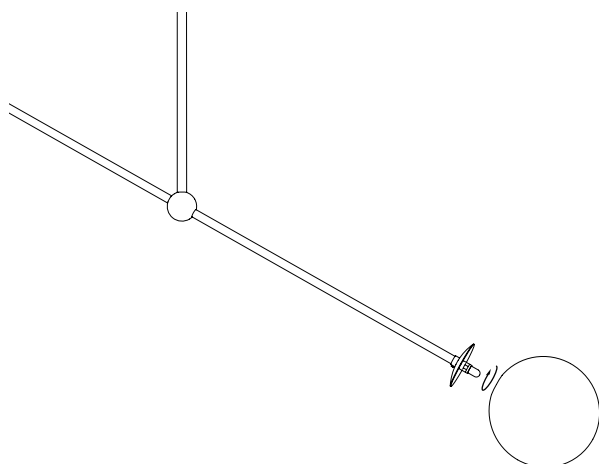
Set the brass sphere on the threaded tube.

2



Insert the light source into the base.

3



Screw the glass globe until the first sign of resistance. Do not tighten stronger than natural resistance.